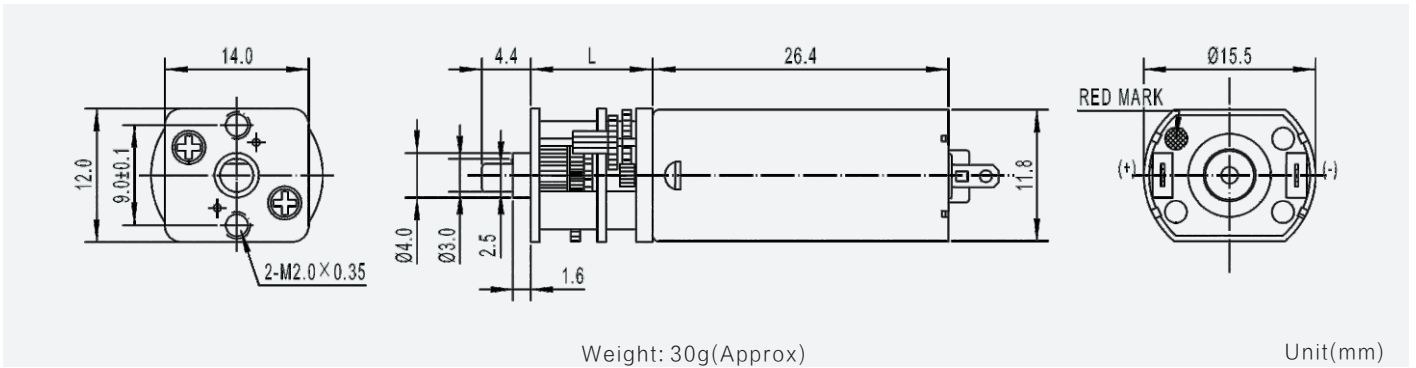
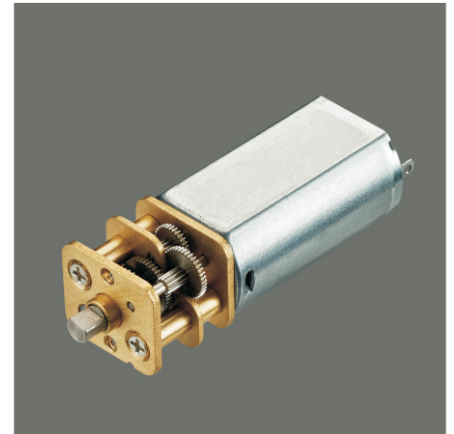


# GM14-050SH

14mm gearbox plus 050 permanent magnet DC motor

Module	0.15/0.2	
Rated torque (kg.cm)	1.0 kg.cm max	
Max momentary tolerance torque (kg.cm)	2.0 kg.cm max	
Reduction ratio	1/30、1/63	1/115、1/130 1/250、1/300 1/350
Number of gear stages	4	5
Gearbox length L (mm)	12.0	



## Gear Motor Technical Data

Reduction ratio		30	63	115	130	150	250	350			
6.0V	No-load speed(rpm)	340	190	105	95	80	50	35			
	Rated speed(rpm)	285	158	92	78	66	42	31			
	Rated torque(kg.cm)	0.22	0.44	0.6	0.8	0.9	1.0	1.0			
12.0V	No-load speed(rpm)	410	200	110	98	85	50	35			
	Rated speed(rpm)	305	150	80	73	63	40	28			
	Rated torque(kg.cm)	0.22	0.44	0.6	0.8	0.9	1.0	1.0			

## Motor Technical Data

Motor model	Rated voltage	No-load		Rated				Stall	
		Speed	Current	Speed	Torque	Current	Power	Torque	Current
	VDC	r/min	mA	r/min	g.cm	mA	W	g.cm	A
TFF-050SH-13120	6.0	12500	45	10000	10	255	1.03	50	1.30
TFF-050SH-08240	12.0	12800	35	9700	10	150	0.99	41	0.55

